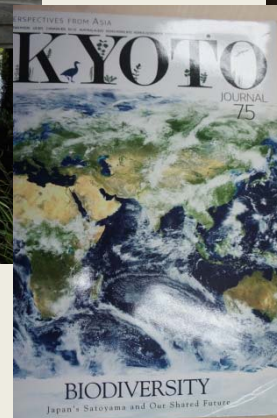
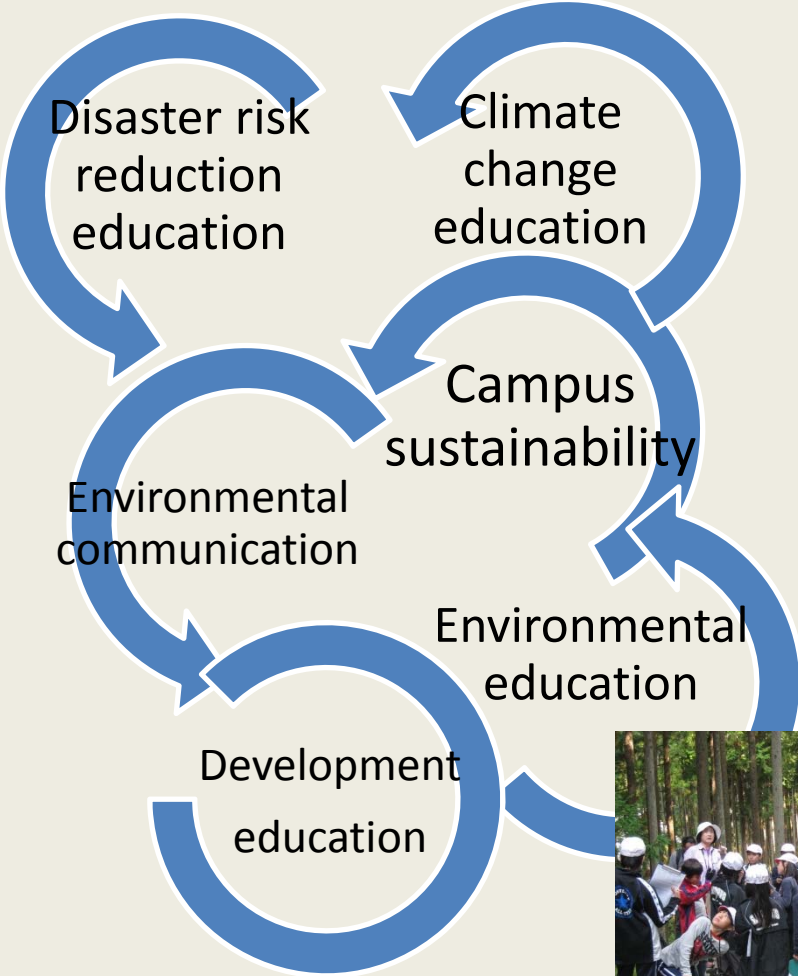


# Environmental Education Laboratory (EEL)



# EEL: Research and study topics

## ESD-RELATED



## OTHER TOPICS



# EEL members

- Current students: 6 (Japan, Vietnam, Laos, Myanmar, Uganda, El Salvador)
- Faculty: Assoc. Prof. Misuzu Asari and Assoc. Prof. Jane Singer
- Many academic backgrounds and research interests
- Shared interest in fostering individuals and communities to become agents of change for a sustainable future

Research topics include:  
educating teachers in ESD,  
volunteer environmental  
communication, disaster risk  
reduction education,  
resettlement of dam-displaced  
residents, community –based  
environmental management,  
waste management in urbanizing  
areas



Prof. Asari

# Internships

- Recent internship sponsors – Quang Nam University, Vietnam; Moriyama High School, Japan; UNICEF, Myanmar; Mote Marine Laboratory, USA; Khulna University, Bangladesh; Uttarakhand state govt., India

Includes UN,  
NGOs,  
universities,  
research  
institutions,  
private sector



# Ongoing research projects (faculty and students)

- Intergenerational impacts and resilience of transmigrant communities in the outer islands of Indonesia, 2015-2018
- Comparing livelihood strategies between mountain and peri-urban resettlement communities in central Vietnam, 2015- 2018
- Waste management and campus sustainability, 2015-2018

