

Kyoto University Opening Symposium

— On-site Laboratory at Mahidol University
on Environmental Studies



Date: March 8 (Fri), 2019
Venue: Faculty of Engineering Building 3,
Mahidol University, Salaya Campus, Thailand
(Teleconference with GSGES, Kyoto University)



Online Application (<https://goo.gl/forms/0Mrsg0YIMISKN6zj1>)
If you have any question, Please inquiry (160onsite@mail2.adm.kyoto-u.ac.jp)

Join us!!



Overall Schedule



Part I (Opening Ceremony)
10:00 ~ 12:00 (JST 12:00 ~ 13:40)

Part II (Symposium)
13:30 ~ 14:50 (JST 15:30 ~ 16:50)

Part III (Group Work in Individual Disciplines)
15:00 ~ 17:00 (no Teleconference)

※Please find detailed schedule in next page



Access

Thailand: Faculty of Engineering Building 3 (Red Building), 4th Floor, Thanakorn Uan-on Auditorium,
Mahidol University (Salaya Campus), Thailand

※Please find detailed map and access in page 3

Kyoto University (Teleconference): Research Bldg No 5, 2nd Floor, Large Lecture room, Yoshida Campus
京大会場：吉田キャンパス、総合研究5号館、2階大講義室

※Please find detailed map and access in page 4

Detailed Schedule

 Presentation at Kyoto University

9:30 ~ 10:00 Registration

Part I (Opening Ceremony) 10:00 ~ 12:00 (JST 12:00 ~ 13:40 Teleconference at Yoshida campus)

Moderator: Wasaporn Techapeerapanich (Fac Eng., MU)

Moderator: Minoru Yoneda (Vice-dean of GS Eng., KU)

Moderator in Kyoto: Hidenori Harada (GSGES, KU)

10:00 ~ 10:15 **Opening Address**

Banchong Mahaisavariya (President, Mahidol University)

Nagahiro Minato (Executive Vice-President, Kyoto University) 

Yasunari Ueno (First Secretary, Embassy of Japan in Thailand)

10:15 ~ 10:30 **Guest Introduction and Photo**


Introduction of Guests in Mahidol University

Suwanna Kitpati Boontanon (Fac. Eng., MU) and Fujii Shigeo (GSGES, KU)

Introduction of Guests in Kyoto University

Hidenori Harada (GSGES, KU) 

Group Photo <individual shootings in Mahidol University and Kyoto University>

10:30 ~ 10:50 **Kyoto U's Proposals for Designated National University Corporation Status and On-site Laboratories** 

Nagahiro Minato (Executive vice-president, KU)

10:50 ~ 11:10 **International Activities in Mahidol Universities**

Banchong Mahaisavariya (President, MU)

11:10 ~ 11:30 **Academic Exchange Activities between Japan and Thailand**

Kuniaki Yamashita (Director, JSPS Bangkok Office)

11:30 ~ 11:40 **Expectation of the On-site Laboratory for Private Sectors - From Environmental Business Side -**

Noriaki Matsuo (Hitachi Zosen Corporation)

11:40 ~ 12:00 **Visit to On-site Laboratory**

Lunch Break 12:10 ~ 13:10

Part II (Symposium) 13:30 ~ 14:50 (JST 15:30 ~ 16:50 Teleconference at Yoshida campus)

Moderator: Ranjna Jindal (Fac Eng., MU)

Moderator: Mamoru Kanzaki (GS Agri., KU)

Moderator in Kyoto: Hidenori Harada (GSGES, KU)

13:30 ~ 13:40 **Introduction of Engineering, Mahidol University**

Yodchanan Wongsawat (Vice Dean for Research & International Relations, Fac Eng., MU)

13:40 ~ 13:50 **Introduction of GSGES (Graduate School of Global Environmental Studies)**

Shinya Funakawa (Dean of GSGES, KU)

13:50 ~ 14:10 **Education and Research Collaboration between Mahidol University and Kyoto**

Suwanna Kitpati Boontanon (Fac Eng., MU) and Fujii Shigeo (GSGES, KU)

14:10 ~ 14:20 **From Double Degree Program to Research Collaboration** 

Masahiro Kihara (SPH, GS Medicine, KU)

14:20 ~ 14:40 **Experience Reports by Students**

Study Life and Experiences of Becoming a Student at Mahidol University, Thailand

Hideaki Anazawa (MC2, GSGES, KU; DD Program)

Academic Life, Conventional Experiences and Social Activities as a Graduate Student at Kyoto University 

Luksanaree Maneechot (DC2, GS Eng, KU; graduate from Chemical Eng. MU)

GSGES Spring Semester Course 2018 Experience in Kyoto University, Japan

Pimchanok Nopprapun (MC2, Fac Eng. MU; Special Audit Student 2018 Program)

Our Academic and Social Experiences from an Intern Standpoint

Chutanan Muangsuwan and Sutida Boonkum (BC4, Fac Eng., MU; Chemical Eng 2018 Program)

14:40 ~ 14:50 **Questions & Answers/Discussions**

Part III (Group work in Individual Disciplines) 15:00 ~ 17:00 (no Teleconference)

15:00 ~ 15:30 **Campus Tour in Mahidol University by a Tram**

15:30 ~ 16:30 **Laboratory Visit and Discussion by Each Discipline (Engineering and Agriculture)**

Engineering: MU Coordinators (Wasaporn, Ranjna, Suwanna, Trakarn, Sira, Wanida, Pattaraporn, *et al.*)

KU Members (Yoneda, Fujii, Nishimura, Anazawa, *et al.*)

Agriculture: MU Coordinators (Romane, Narin, Watchara, Areeya, *et al.*)

KU Members (Funakawa, Kanzaki, Saizen, Liu, Tokito, *et al.*)

16:30 ~ 16:55 **Plenary Reports and Comments**

Moderator: Suwanna Kitpati Boontanon (Fac Eng. MU)

Moderator: Izuru Saizen (GSGES, KU)

Report from Engineering by Trakarn Prapasongsa (Fac Eng. MU) and Minoru Yoneda (GS Eng. KU)

Report from Agriculture by Romane Thongdara (Fac Eng. MU) and Mamoru Kanzaki (GS Agri., KU)

Other Comments

16:55 ~ 17:00 **Closing**

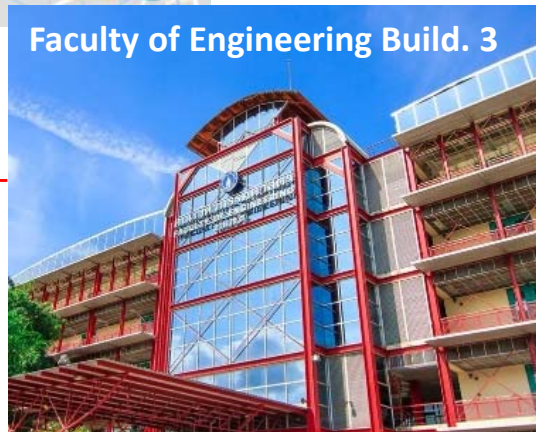
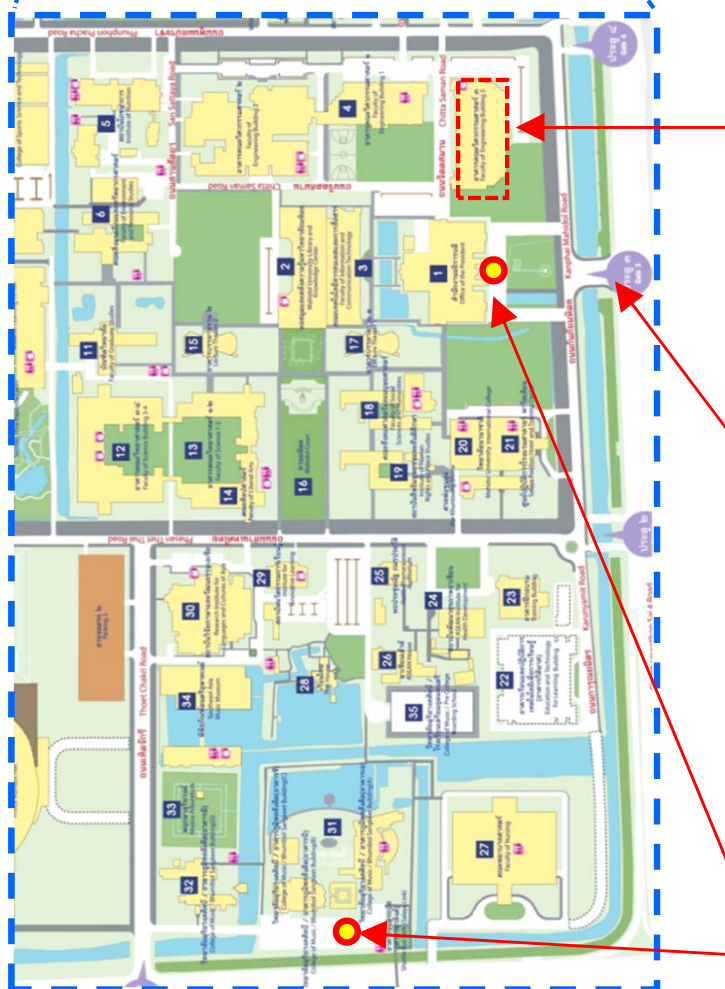
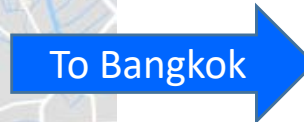
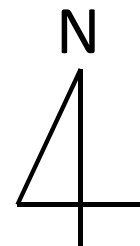
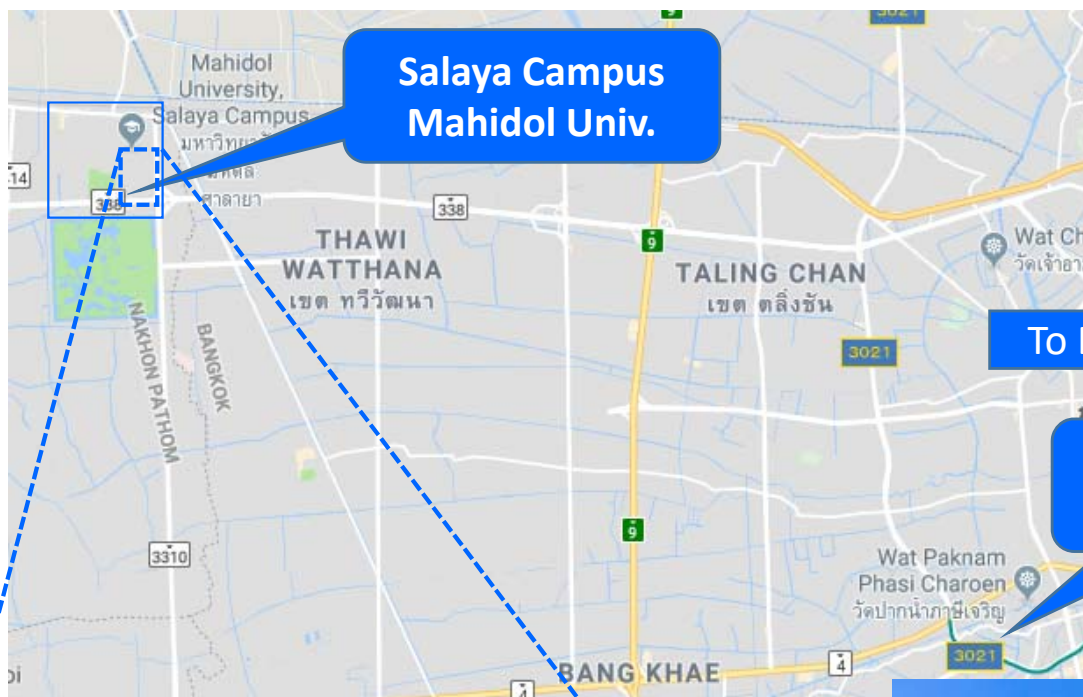
Yodchanan Wongsawat (Vice Dean for Research and International Relations, Fac Eng., MU)

Shigeo Fujii (GSGES, KU)

Access to Mahidol University Venue

- 1) If you take a taxi, please enter from Gate 3 (Phutthamonthon Sai 4 Rd.) and go north.
- 2) If you take a BTS SkyTrain please come by Silom Line and get off at Bang Wa Station. After exiting the BTS station, take a taxi for Gate 3, or use a shuttle bus (Salaya Link <https://www.music.mahidol.ac.th/salayalink/>)

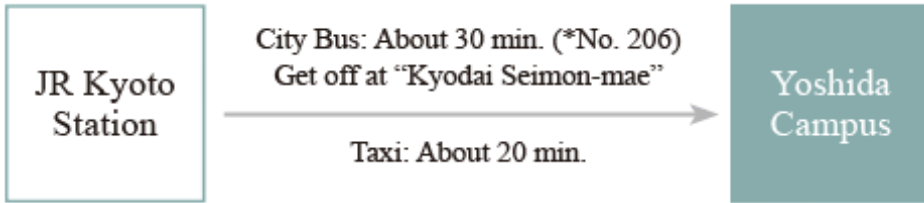
✂ You can also find access in the website of Mahidol University:
https://www.eg.mahidol.ac.th/egmu_eng/about/visit-us
or download the map of Salaya Campus, Mahidol University
https://www.eg.mahidol.ac.th/egmu_eng/images/slides/mapsalaya.jpg



Drop-off location for Salaya Link
Boarding location for Salaya Link



Access to Kyoto University (Teleconference Venue)



*Bound for Kitaoji Bus Terminal via Higashiyama Street.



Bus Stop
"Kyodai Seimon-mae"



※You can also find access in the website of Kyoto University:
<https://www.kyoto-u.ac.jp/en/access/>