

Kyoto University Opening Symposium

**On-site Laboratory at Mahidol University
For Educational and Research Collaboration
on Environmental Studies**



สำนักอธิการบดี
PRINCE MAHIDOL HALL

Date: March 8 (Fri), 2019

Venue: Faculty of Engineering Building 3,
Mahidol University, Salaya Campus, Thailand
(Teleconferencing with GSGES, Kyoto University)



Join us!!

Online Application (<https://goo.gl/forms/OMrsg0YIMISK6zj1>)

If you have any questions, please email: 160onsite@mail2.adm.kyoto-u.ac.jp



Overall Schedule

Part I (Opening Ceremony)
10:00 ~ 12:00 (JST 12:00 ~ 13:40)

Part II (Symposium)
13:30 ~ 14:50 (JST 15:30 ~ 16:50)

Part III (Group Work in Individual Disciplines)
15:00 ~ 17:00 (no Teleconferencing)



※Please find the detailed schedule on the next page



Venues

Thailand: Faculty of Engineering Building 3 (Red Building), 4th Floor, Thanakorn Uan-on Auditorium,
Mahidol University (Salaya Campus), Thailand

※Please find detailed map and access on page 3

Kyoto University (Teleconferencing): Research Bldg #5, 2nd Floor, Large Lecture Room, Yoshida Campus
京大会場：吉田キャンパス、総合研究5号館、2階大講義室

※Please find a detailed map and access on page 4

Detailed Schedule



Presentation at Kyoto University

9:30 ~ 10:00 Registration

Part I (Opening Ceremony) 10:00 ~ 12:00 (JST 12:00 ~ 13:40 Teleconferencing at Yoshida

Moderator: Wasaporn Techapeerapanich (Fac Eng., MU)

Moderator: Minoru Yoneda (Vice-dean of GS Eng., KU)

Moderator in Kyoto: Hidenori Harada (GSGES, KU)

10:00 ~ 10:15 Opening Addresses

Banchong Mahaisavariya (President, Mahidol University)

Nagahiro Minato (Executive Vice-president, Kyoto University) (A) K

Yasunari Ueno (First Secretary, Embassy of Japan in Thailand)

10:15 ~ 10:30 Guest Introductions and Photos

Introduction of Guests at Mahidol University

Suwantha Kitpatit Boontanon (Fac. Eng., MU) and Shigeo Fujii (GSGES, KU)

Introduction of Guests at Kyoto University

Hidenori Harada (GSGES, KU)

Group Photos <Photo shoots at Mahidol University and Kyoto University>

10:30 ~ 10:50 Kyoto U Proposals for Designated National University Corporation Status and On-site Laboratories (A) K

Nagahiro Minato (Executive Vice-president, KU)

10:50 ~ 11:10 Higher Education & Internationalization

Banchong Mahaisavariya (President, MU)

11:10 ~ 11:30 Academic Exchange Activities between Japan and Thailand

Kuniaki Yamashita (Director, JSPS Bangkok Office)

11:30 ~ 11:40 Private Sector Objectives for the On-site Laboratory - A Voice from Environmental Businesses

Noriaki Matsuo (Hitachi Zosen Corporation)

11:40 ~ 12:00 Visit to the On-site Laboratory

Lunch Break 12:10 ~ 13:10

Part II (Symposium) 13:30 ~ 14:50 (JST 15:30 ~ 16:50 Teleconferencing at Yoshida campus)

Moderator: Ranjna Jindal (Fac Eng., MU)

Moderator: Mamoru Kanzaki (GS Agri., KU)

Moderator in Kyoto: Hidenori Harada (GSGES, KU)

13:30 ~ 13:40 Introduction of Engineering at Mahidol University

Yodchanan Wongsawat (Vice Dean for Research & International Relations, Fac Eng., MU)

13:40 ~ 13:50 Introduction of GSGES (Graduate School of Global Environmental Studies)

Shinya Funakawa (Dean of GSGES, KU)

13:50 ~ 14:10 Educational and Research Collaboration between Mahidol University and Kyoto University

Suwantha Kitpatit Boontanon (Fac Eng., MU) and Shigeo Fujii (GSGES, KU)

14:10 ~ 14:20 From Double Degree Program to Research Collaboration

Masahiro Kihara (SPH, GS Medicine, KU)

14:20 ~ 14:40 Voices from Students: Research and Study with Partner Universities

Study Life and Experiences of Becoming a Student at Mahidol University, Thailand

Hideaki Anazawa (MC2, GSGES, KU; DD Program)

Academic Life, Conventional Experiences and Social Activities as a Graduate Student at Kyoto University (A) K

Luksanaree Maneechot (DC2, GS Eng, KU: graduate from Chemical Eng. MU)

GSGES Spring Semester Course 2018 Experience at Kyoto University, Japan

Pimchanok Nopprapun (MC2, Fac Eng. MU; Special Audit Student 2018 Program)

Our Academic and Social Experiences from an Intern Standpoint

Chutanan Muangsuwan and Sutida Boonkum (BC4. Fac Eng., MU; Chemical Eng 2018 Program)

14:40 ~ 14:50 Questions & Answers/Discussion

Part III (Group Work in Individual Disciplines) 15:00 ~ 17:00 (no Teleconferencing)

15:00 ~ 15:30 Campus Tour at Mahidol University by Tram

15:30 ~ 16:30 Laboratory Visit and Discussion for Each Discipline (Engineering and Agriculture)

Engineering: MU Coordinators (Wasaporn, Ranjna, Suwantha, Trakarn, Sira, Wanida, Pattaraporn, et al.)

KU Members (Yoneda, Fujii, Nishimura, Anazawa, et al.)

Agriculture: MU Coordinators (Romanee, Narin, Watchara, Areeya, et al.)

KU Members (Funakawa, Kanzaki, Saizen, Liu, Tokito, et al.)

16:30 ~ 16:55 Plenary Reports and Comments

Moderator: Suwantha Kitpatit Boontanon (Fac Eng. MU)

Moderator: Izuru Saizen (GSGES, KU)

Report from Engineering by Trakarn Prapasongsa (Fac Eng. MU) and Minoru Yoneda (GS Eng. KU)

Report from Agriculture by Romanee Thongdara (Fac Eng. MU) and Mamoru Kanzaki (GS Agri., KU)

Other comments

16:55 ~ 17:00 Closing

Yodchanan Wongsawat (Vice Dean for Research and International Relations, Fac Eng., MU)

Shigeo Fujii (GSGES, KU)

Access to Mahidol University Venue

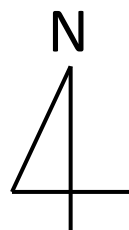
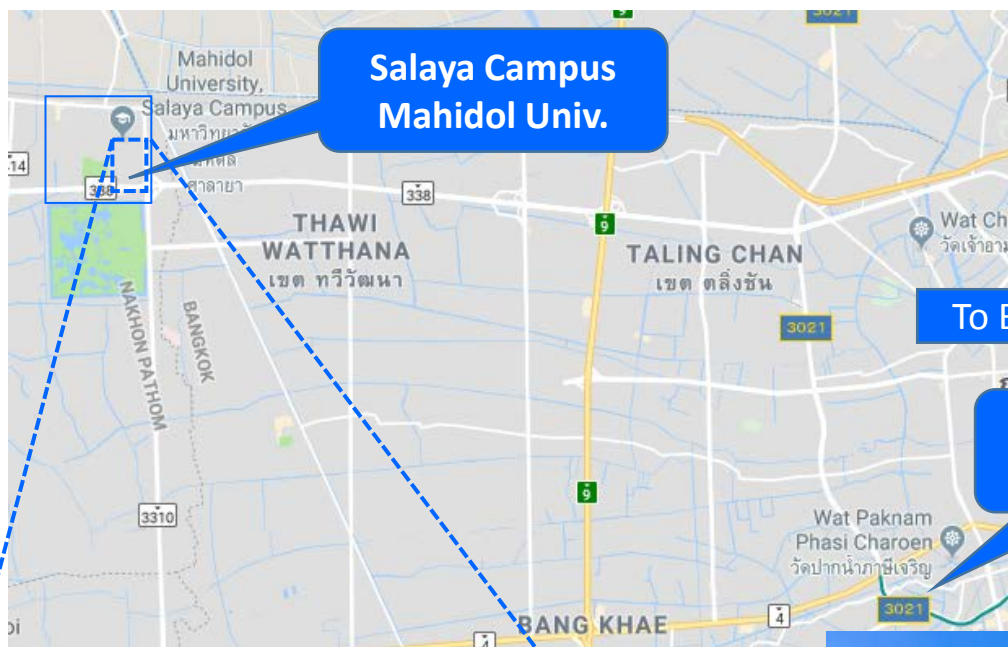
- 1) If you take a taxi, please enter from Gate 3 (Phutthamonthon Sai 4 Rd.) and go north.
- 2) If you take a BTS SkyTrain, please come by Silom Line and get off at Bang Wa Station. After exiting the BTS station, take a taxi for Gate 3, or use a shuttle bus (Salaya Link <https://www.music.mahidol.ac.th/salayalink/>)

※You can also find access information on the Mahidol University website:

https://www.eg.mahidol.ac.th/egmu_eng/about/visit-us

or download the map of Salaya Campus, Mahidol University

https://www.eg.mahidol.ac.th/egmu_eng/images/slides/mapsalaya.jpg



To Bangkok

Bang Wa
BTS Sta.



Faculty of Engineering Build. 3



Access to Kyoto University (Teleconferencing Venue)

JR Kyoto
Station

City Bus: About 30 min. (*No. 206)
Get off at “Kyodai Seimon-mae”

Taxi: About 20 min.

Yoshida
Campus

*Bound for Kitaoji Bus Terminal via Higashiyama Street.



Bus Stop
“Kyodai Seimon-mae”



※You can also find access information on the Kyoto University website:

<https://www.kyoto-u.ac.jp/en/access/>