

Environmental Health Sciences

Key word:

environmental pollutants, air pollution, chemicals, health effects, experiment, in vivo, in vitro



**Hirohisa Takano,
Professor**



**Akiko Honda,
Assistant Professor**



**Raga Ishikawa,
Program Specific
Assistant Professor**

Environmental Health Sciences

Environmental Pollution



Experimental Approach

Evaluate the Health Effects
Elucidate the underlying Mechanisms

Clarify the Relationship between Human and the Environment, and Protect Healthy Life

Health Impact Assessment of Environmental Pollution by Experimental Approach

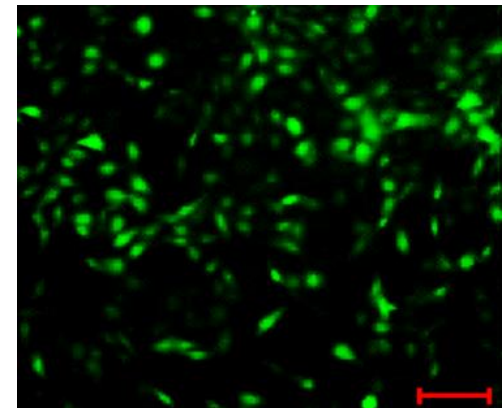
We are experimentally evaluating and analyzing the effects of environmental pollutants on health, especially the respiratory system and immune systems, and the underlying mechanisms using cultured cells and animals.

Outline of study

- To elucidate health effects of air pollutants and the underlying mechanisms
- To identify responsible factors and the components of air pollutants that contribute to health effects
- To elucidate health effects of environmental chemicals and the underlying mechanisms
- To reduce health effects of environmental pollutants using technology of medical engineering



Symptoms of atopic dermatitis exacerbated by environmental chemicals



Oxidative stress in airway epithelial cells exposed to environmental pollutants